



# Well Watch<sup>®</sup> 700 Series

Sonic Water Well Level Monitoring

Patent Pending

**Intelligent water well management system for commercial applications.**



**Level & Flow Monitoring**



**Resource Management**



**Pump System Control**



**Remote Telemetry**

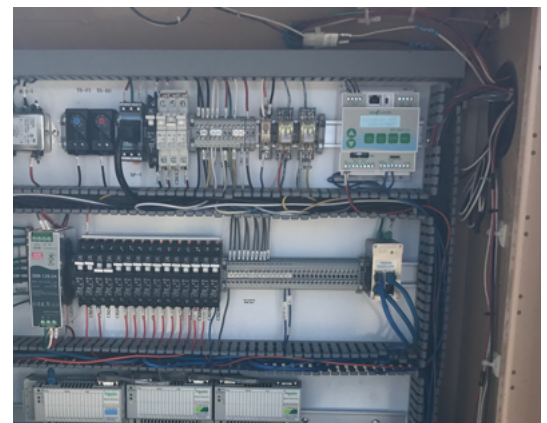
## Features:

- Measures water levels using sound waves, no risk of contamination
- Complete well management and control, providing real time asset data
- Simple external installation, no well decommissioning (prior or during)
- Monitor levels in wells with caustic water without damaging the sensors, protecting equipment investments
- Minimize or eliminate manual level measurements, reducing labor costs
- Maintain well pressure while still obtaining real time data
- Customizable data, set reference point/update frequency/logging rate
- Integrates easily with SCADA and other communications methods



The Well Watch 700 is the most powerful and versatile well monitoring system on the market today. It is the only meter that has the ability to measure water levels in commercial water wells with levels down to 7000ft, up to 30" diameter, and with top mount turbine or submersible pumps. Operating on low frequency sound waves means that there is no need for equipment to be lowered down into the casing. The versatile sound waves can travel past obstructions, installed well equipment and around corners. The Well Watch boasts an intuitive software that monitors well conditions and automatically adjusts to maintain the most accurate readings.

The 700 was designed to be a well management hub. It will not only provide the user with static, drawdown, recovery and flow data at an interval chosen by the user but also boasts two independently programmable relays for pump control and remote alarms. There are multiple outputs to choose from including RS232, RS485, 4-20mA and 0-5V to communicate with any pre-existing system. An internal data logger allows it to operate as a stand alone system or a backup in case of communication loss, logging up to 25 million data points. Collected data can be accessed over the USB connection or by removing the SD card.



# Well Watch<sup>®</sup> 700 Series

## Specifications

### 730 Well Watch Probe Specifications:

**PHYSICAL:**

Type 304 Stainless steel weatherproof housing  
 Dimensions: 4.4 x 4.4 x 10.15"  
 Weight: 10 lbs  
 Well pressure up to 100 psi  
 2" FPT Connection to well access port

**POWER:**

Power supplied by 710 Controller (Weatherproof conduit connection for strain relief or sealtite connectors)

**ENVIRONMENTAL:**

Temperature - -20 to 175 F (-25 to 80 C)  
 Humidity - 5 to 95% non-condensing

**COMMUNICATIONS:**

4 wire to 710 Controller



### 710 Well Watch Controller Specifications:

**PHYSICAL:**

Heavy duty ABS housing  
 Dimensions: 4.8 x 4 x 2.36"  
 Weight: .5 lbs  
 Din rail or flange mounting, Designed for dry locations

**MEASUREMENT:**

Units - English (ft & in), Metric or Imperial  
 Range - 15 to 7000 ft (5 to 2100M)  
 Resolution - .05 ft  
 Accuracy - .1 ft

**POWER:**

External Power - 12 to 36VDC at 300mA max (with all options enabled)  
 Real Time Clock- Li Ion 3V battery CR2032

**ENVIRONMENTAL:**

Temperature - -20 to 175 F (-25 to 80 C)  
 Humidity - 5 to 95% non-condensing

**LOGGING:**

Extended Memory - 2GB nonvolatile flash memory for 25 million data points  
 Automatic Logging Rates - 1 sec to 1 day per sample

**COMMUNICATIONS:**

RS232 Serial Port: Baud 300-57600, format selectable (19200 baud,8,1,n default), streaming output, programming interface  
 RS485 Serial Modbus Port: baud 300-57600, RTU/ASCII (19200 baud,8,1,n default)  
 Alarm Output: Isolated relay contact 250V AC .25A (30VDC 2A) max  
 Pump Control Output: isolated relay contact 250V AC .25A (30VDC 2A) max  
 Pulsed Flowmeter Input  
 Analog Output: 0-5V and independent 4-20mA

