



Well Watch 670 & 670B

Sonic Water Level Meter



User Manual

www.enoscientific.com

Eno Scientific
PO Box 1586
Hillsborough, NC 27278
USA

www.enoscientific.com
910-778-2660

Copyright Notice
Copyright © 2014 Eno Scientific, Hillsborough, NC 27278, USA.
All rights reserved.

Part number: 661-901-6703

WELL WATCH 670/670B

USER MANUAL

TABLE OF CONTENTS

PRODUCT OVERVIEW.....	4
QUICK START GUIDE.....	6
CAUTIONS.....	9
BACKGROUND – HOW IT WORKS.....	11
SETUP.....	13
OPERATION.....	17
DISPLAY MODE DESCRIPTIONS.....	19
SET MODE DESCRIPTIONS.....	20
LOGGING.....	24
USB COMMUNICATIONS.....	25
ANALOG OUTPUT.....	25
RS232 COMMUNICATIONS.....	26
REMOTE SERIAL OPERATION OVER RS232.....	26
INTERPRETATION OF DATA.....	29
MODBUS COMMUNICATIONS.....	29
MAINTENANCE.....	32
FREQUENTLY ASKED QUESTIONS.....	33
TROUBLESHOOTING.....	35
ERROR CODES.....	36
SPECIFICATIONS.....	37
ADDITIONAL NOTES.....	38
WARRANTY AND SERVICE.....	39



PRODUCT OVERVIEW

The Well Watch 670/670B is a simple to use self-contained acoustic ranging instrument designed specifically to find the distance through a closed pipe (well casing or sounding tube as small as 1/2") from one closed end to the to the other. The Well Watch works by sending a low frequency sound pulse into the pipe, then measuring the time it takes for the echo to return from the opposite end, which could be a plug or water surface. The distance is calculated using the sound speed and the time. The low frequency sound can follow the pipe around corners and in any direction up/down or horizontally. It can be used to measure any closed pipe, straight or crooked with a constant diameter.

The Well Watch 670 consists of a control unit and a probe which are connected by a latching hinge. The control unit contains the driver electronics, processor, display, and keypad, while the probe contains a speaker, a microphone and a threaded spout to connect to the test pipe.

When the unit powers, it immediately begins sending sound pulses into the well and attempts to characterize the well. After a few seconds, the depth is calculated and output for the user. The data will also be sent in a variety of formats through the several outputs provided.

The Well Watch 670 requires 7-16V DC external power. A power adapter is supplied with the unit to supply the DC power from a standard AC power outlet, but a battery pack or 10W Solar Power Kit (Part 5321) could also be used.

The Well Watch 670B is a version of the Well Watch 670 that has internal rechargeable batteries. The 670B can also be powered by 7-16V DC or the optional 670B Solar panel (Part 5321-670B).

All of the optional Well Watch 670 and 670B accessories are available on our website at www.enoscientific.com/enostore/.

670 QUICK START GUIDE

The Well Watch is nearly ready to go right out of the box. Follow the few steps below to find the depth to water. If depth to the water is all you are interested in, then this is all you need to read. To learn about the more advanced features continue reading the operation section of this manual.

- 1. Attach spout to well.** Insert the probe end into the vent hole on the well. If the casing is open, it should be covered with anything solid such as rigid plastic with a hole in it for the probe. The cover does not need to be air tight, but the tighter it is, the stronger the signal will be.
- 2. Turn meter on.** Apply power to turn the meter on. You should hear a popping sound coming from the probe.
- 3. Measure well.** Read the measured depth on the display. If the measured distance is not as expected, then proceed to the next step to change the initial settings.
- 4. Change initial settings.** Press the SET button repeatedly to show the various settings to be changed. Press the UP or DOWN button to change setting. When set as desired, press SET again to change another setting or press DISP to return to read the measured depth. For best depth results, the **Range Min**, **Range Max**, and the **Well Temperature** should all be set.
- 5. Read other information.** While reading the depth display, press the UP or DOWN buttons to read other information.

We encourage you to read the frequently asked questions section. They really are frequently asked. Also, visit our website www.enoscientific.com for the latest manual and installation tips.

670B QUICK START GUIDE

NOTE: For best results, you should fully charge the Well Watch 670B prior to installation. The Well Watch can be charged by plugging it into a wall outlet with the included AC Power Supply. When the unit is charging there will be 2 illuminated red and green lights next to the ON/OFF switch. Once fully charged the red lights will go out. The battery life will depend on your chosen sample rate and should be recharged when the battery voltage gets to 6V to maintain optimum functionality of the sensor and avoid damage to the batteries. Add on the optional Solar Panel to keep the 670B charged without missing any readings (available for purchase on the online Eno Store).

- 1. Setup the Well Watch.** Press the microphone tube into the small hole at the bottom of the Well Watch where the spout attaches. The tube should be long enough to reach through all of the fittings and extend approximately 1" into the well cavity. This tube can be lengthened up to 6ft or shortened.
- 2. Attach spout to well.** Choose the appropriate sized nozzle and screw it into the vent hole on the well. If the casing is open, it should be covered with anything solid such as rigid plastic with a hole in it for the probe. The cover does not need to be air tight, but the tighter it is, the stronger the signal will be.
- 3. Connect Well Watch to spout.** Slide the microphone tube into the spout and connect the Well Watch to the spout using the plastic ring nut.
- 4. Turn meter on.** There is an ON/OFF switch on the circuit board found at the middle of the unit. You should hear a popping sound coming from the probe.
- 5. Measure well.** Read the measured depth on the display. If the measured distance is not as expected, then proceed to the next step to change the initial settings.
- 6. Change initial settings.** Press the SET button repeatedly to show the various settings to be changed. Press the UP or DOWN button to change setting. When set as desired, press SET again to change another setting or press DISP to return to read the measured depth. For best depth results, the **Range Min**, **Range Max**, and the **Well Temperature** should all be set. **NOTE:** For the best battery performance make sure and choose a **Power Save** setting. We suggest at least **Medium**
- 7. View other information.** While reading the depth display, press the UP or DOWN buttons to view other information, such as battery voltage.

CAUTIONS

The Well Watch is not water proof!

It is weather resistant, rain and splashing but not submersion. The unit will be damaged if submerged under water. Caution must also be used if the water level in the well reaches the surface.

Both sides of the probe must be near atmospheric pressure!

The probe cannot be used on a well which is significantly above or below atmospheric pressure. A vent port must be provided in these cases. Applying pressure to either side of the probe will damage the pulse generator.

External power cannot exceed 16 volts DC!

When supplying external power to the Well Watch, care must be taken to insure that voltage spikes or induced transients are not conducted into the unit. Over voltage and surge protectors and proper grounding should be used if this is a possibility.

Use surge suppressors and grounding on signal lines!

When connecting the Well Watch to remote equipment through the RS232 port or analog outputs, care is required to prevent ground loops, lightning induced transients etc from reaching the Well Watch. Over voltage and surge protectors and proper grounding should be used if this is a possibility.

FCC Warning Statement.

THIS DEVICE COMPLIES WITH PART 15 OF THE FCC RULES. OPERATION IS SUBJECT TO THE FOLLOWING TWO CONDITIONS: (1) THIS DEVICE MAY NOT CAUSE HARMFUL INTERFERENCE, AND (2) THIS DEVICE MUST ACCEPT ANY INTERFERENCE RECEIVED, INCLUDING INTERFERENCE THAT MAY CAUSE UNDESIRED OPERATION.

NOTE: THE GRANTEE IS NOT RESPONSIBLE FOR ANY CHANGES OR MODIFICATIONS NOT EXPRESSLY APPROVED BY THE PARTY RESPONSIBLE FOR COMPLIANCE. SUCH MODIFICATIONS COULD VOID THE USER'S AUTHORITY TO OPERATE THE EQUIPMENT.

Industry Canada.

This device complies with Industry Canada license-exempt RSS standard(s). Operation is subject to the following two conditions: (1) this device may not cause interference, and (2) this device must accept any interference, including interference that may cause undesired operation of the device.

Le présent appareil est conforme aux CNR d'Industrie Canada applicables aux appareils radio exempts de licence. L'exploitation est autorisée aux deux conditions suivantes : (1) l'appareil ne doit pas produire de brouillage, et (2) l'utilisateur de l'appareil doit accepter tout brouillage radioélectrique subi, même si le brouillage est susceptible d'en compromettre le fonctionnement.

Under Industry Canada regulations, this radio transmitter may only operate using an antenna of a type and maximum (or lesser) gain approved for the transmitter by Industry Canada. To reduce potential radio interference to other users, the antenna type and its gain should be so chosen that the equivalent isotropically radiated power (e.i.r.p.) is not more than that necessary for successful communication.

Conformément à la réglementation d'Industrie Canada, le présent émetteur radio peut fonctionner avec une antenne d'un type et d'un gain maximal (ou inférieur) approuvé pour l'émetteur par Industrie Canada. Dans le but de réduire les risques de brouillage radioélectrique à l'intention des autres utilisateurs, il faut choisir le type d'antenne et son gain de sorte que la puissance isotrope rayonnée équivalente (p.i.r.e.) ne dépasse pas l'intensité nécessaire à l'établissement d'une communication satisfaisante.



BACKGROUND – HOW IT WORKS

The Well Watch works by pushing an air pressure wave or low frequency sound wave into the well. For this reason, it is important that the probe be connected to a closed end of the pipe to prevent the air pressure from just escaping the open end. After the Well Watch sends its sound pulse, it listens for the pulse to return. And since sound travels at a predictable rate, it can tell where in the well the pulse was reflected by timing the returning pulse.

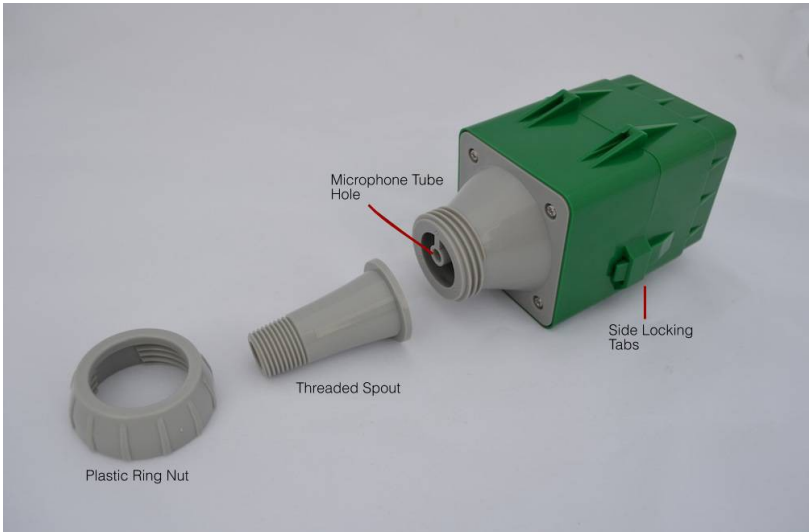
The pressure wave generated by the probe will continue to travel into the well until something disturbs it. Every imperfection in the well will disturb the wave, and every time it is disturbed, some of the wave changes direction and is reflected back to the Well Watch leaving the main wave a little weaker. A complete obstruction like the surface of the water, reflects the entire remaining wave. Most common obstructions like wires and tubes and pipe couplings do not reflect enough of the wave to cause a problem, provided that the remaining part of the main wave is relatively big enough to be obviously the one of interest.

Some imperfections like a change in casing diameter can cause a significant part of the wave to be reflected. Where the water may be very far away and its reflected pulse very weak, the reflection from the imperfection could be the largest wave returning to the Well Watch. In this case, the Well Watch would lock in on the erroneous reflection and tell you that the water was at the end of the casing. The Well Watch therefore offers settings to limit the range in which it will look for reflections. If for example the casing in your well ended at 40 feet and the water was around 80 feet, then the minimum range could be set to 60 feet so that the Well Watch would ignore any reflection from the casing.

The sound wave traveling through the well also loses energy as it travels, more as the surface of the well casing gets rough or porous. To compensate for this, the Well Watch increases its gain with time to listen for fainter signals. This can cause problems if the Well Watch listens for too long. The gain will get so high that the pump noise or even noise from outside the well will outweigh the desired pulse. Therefore, the maximum range setting is available to tell the Well Watch how long to listen. If for example the pump is mounted at 200 feet, then there is no reason to set any more than 250 ft as a maximum range.

The strength of the sound pulse generated by the probe depends on how much space it needs to fill. A 12" pipe is 4 times larger than a 6" pipe in volume and therefore the pulse will be 4 times smaller. A weaker pulse becomes more susceptible to pump noise and loss with depth. These wells usually require a sounding tube installed in the well which reaches into the water and provides a tight connection to the probe at the top. A 3/4" or 1" tube is adequate. For wells over 10" in diameter we suggest upgrading to the commercial grade Well Watch 700.

Something to keep in mind, especially for shallow wells, is that the sound wave bounces off the top and bottom of the well. So it is possible for the pulse to bounce back and forth many times. In a well where the water level is at 6 feet, the Well Watch would hear a reflection at 6 feet, then again at 12 feet, then 18 etc, until the pulse gets weak enough to ignore. In this example, you would be able to see the multiple reflections by increasing the min range. When set to 9ft, the depth would read 12. When set to 14ft, it would read 18 etc. In this case, it may be helpful to leave a small leak at the probe to help dissipate the pulse.

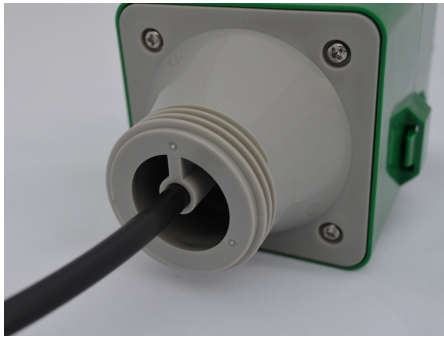


SETUP

1 - Connect the spout to the well. 3 spouts are supplied with the well watch with standard male pipe threads 1/2", 3/4", and 1". The spouts are designed to be threaded into vent holes near the end of the well. It is not required that the spout be vertical or near the center of the well. It is also permissible to use adapter fittings to clear obstructions. Assemble the fittings from the well to the spout remembering to place the plastic ring nut on the spout before screwing it in place. The spout should not be more than hand tight.



2 - Press the microphone tube into the small hole where the spout attaches. The tube should be long enough to reach through all of the fittings and reach approximately 1" into the well cavity. The tube can be extended up to 6ft. The tubing is 1/4" OD PE and is available at most hardware stores if additional tubing is required.



3 - Slide the microphone tubing into the spout and connect the Well Watch to the spout with the plastic ring nut.



4 – Open the well watch to expose the electrical terminals by squeezing the locking tabs on the side of the unit.

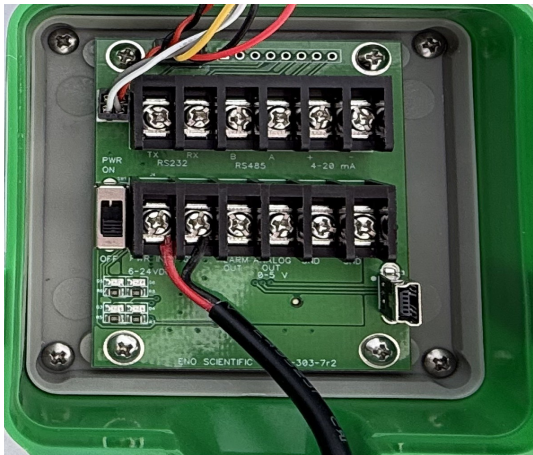


5 –
For the Well Watch 670: Attach 7-12 volt power to the PWR IN terminal with the positive on the PWR IN terminal and negative on the GND terminal. The included adapter cable provides a connector for the included AC power adapter. The adapter cable can be extended up to 500 ft using #24AWG wire. The adapter wire with the white stripe is positive.



For the Well Watch 670B:

The 670B needs to be fully charged prior to being deployed in the field. It can be charged by plugging it into a wall outlet using the included power supply. When plugged up 2 red lights and 2 green lights will be illuminated under the ON/OFF switch. Once the unit is fully charged the red lights will go out. The green lights will stay illuminated while it is connected to external power.



6 – Attach signal wiring.

RS232 – 3 wires are required to connect the RS232 port to another device such as a PC with a 9 pin D connector. The TX terminal on the well watch connects to pin 2 of the D connector, RX to pin 3, and GND to pin 5.

RS485 - 3 wires are required to connect the RS485 port to a Modbus bus. The A line, the B line, and the shield to the GND terminal.

0-5v Analog out – 2 wires are required, the Analog Out terminal is the positive and GND is the negative. This terminal can source up to 15ma.

4-20ma out – External power up to 36 volts is required to power the current loop. This is frequently provided by the remote monitoring equipment and must be isolated from

the Well Watch power. The positive wire connects to the + terminal, and negative to the – terminal.

Alarm – 2 wires are required, the Alarm terminal is positive and the GND terminal is negative. This output can source up to 5 volts at 15ma.

7 – Route the wires opposite the hinge and close the unit so that the wires come through the opening.

Protect unit to avoid damage and direct weather exposure

OPERATION

POWER ON: Apply power to start the Well Watch 670 (*Turn power switch to the ON position for 670B*). The probe will pulsate and the LCD screen will display a product information screen for a few seconds then go to the default DISPLAY mode screen. The depth is displayed on the top line once the unit adjusts to the well and calculates a stable reading. While the unit adjusts to the well the display will read “DEPTH SEARCHING.”

Note: If error conditions exist, line two of the display will be replaced by an alternating error message. See the ERROR CODES section for details.

The Well Watch 670/670B has two different operating modes, DISPLAY mode and SET modes. The DISPLAY modes are accessed by pressing the DISP button, and the SET modes are accessed by repeatedly pressing the SET button. The DISPLAY modes are used to show measurement data, and the SET modes are used to change operating parameters of the Well Watch.

There are two DISPLAY modes:

- 1 – DEFAULT display screen which shows current measurement data
- 2 – TIME AND DATA display screen which shows the system time and date.

Pressing the DISP button advances the DISPLAY mode by one with each press and starts over when reaching the end.

There are several primary user SET modes which advance with each press of the SET button. A complete description of the SET modes can be found in the SET MODE section of this manual. While in any SET mode, pressing the DISP button will return to the default DISPLAY mode. Similarly when in a DISPLAY mode, pressing the SET button puts the Well Watch in the first SET mode.

DEFAULT DISPLAY: While the display shows depth on the top line, press the UP or DOWN button to scroll through additional information on the second line. The following information may be available depending on options installed and enabled:

1. Probe – temperature measured in the control unit.
2. Bat – measured voltage of the external power supply.
3. Diagnostic Data – information about the quality of the measurement.

TIME AND DATE: Press the DISP button to view the system date and time. While the date and time are displayed, press the SET button to edit the date and time. Use the arrow buttons to adjust the information. Press the SET button again to advance to the next number to be set. Press the DISP button to return to the depth reading.

SET MODES: Press the SET button while the depth is displayed to view and change any of the system settings. Continue to press SET to scroll through all of the settings. Sounding stops while in a SET mode. After 30 seconds of inactivity sounding will automatically resume or press the DISP button at any time to return to the depth reading instantly. While viewing a SET screen, press the UP or DOWN button to change the value. Rapid scrolling is activated by holding the up or down button for about a second. Scrolling gets faster and faster while the button is held down. When the value is as desired, press the SET button to go to the next setting or the DISP button to return to operation. The new settings are saved automatically as they are changed so there is no need to press ENTER.

The new settings will be remembered while power is maintained, but will be reset to factory defaults when the unit is turned off, unless the settings are saved. Press the SET button to find the Save Settings page. Press ENTER to permanently save the new settings.

There are 16 main system settings screens (SET MODES) as follow:

1. Product Info – Displays model number, version and serial number.
2. Unit ID – User settable well ID number.
3. Range Min – Sets the minimum range to detect.
4. Range Max – Sets the maximum depth to be measured.
5. Well Temp – Sets the well deep temperature.
6. Methane- Sets the concentration of methane in the well.
7. Sounding Tube Diameter- Sets diameter for tubes under 2" in diameter.
8. Well Diameter- Sets the well casing diameter.
9. Well Depth- Sets the drilled depth of the well.
10. Offset- Sets the offset for level discrepancies.

11. Logging – Enables data logging and additional set screens.
12. RS232 Data – Enables data reporting on RS232 connection. (additional set screens are available if this is enabled)
13. RS485 Modbus – Enables data reporting on RS485 connection. (additional set screens are available if this is enabled)
14. RF Com – Enables data reporting on the wireless RF connection. (additional set screens are available if this is enabled)
15. Analog Mode – Choose between 0-5V or 4-20mA output
16. Alarm Output - (Additional set screens are available if this is enabled)
17. Units – Changes display units, decimal feet, feet & inches, or metric.
18. Power Save- Enable power save and choose measurement intervals.
19. Contrast – Adjusts the contrast level on the LCD screen
20. Save Settings – Press enter to save new settings after power off.
21. Factory Reset – Press enter to set all settings back to factory defaults.

DISPLAY MODE DESCRIPTIONS

DEPTH DISPLAY – The default display mode after power-up. While this display is active, the unit is operational, sending pulses and timing the echoes. The depth is displayed on the top line and additional user selectable information is displayed on the second line. The depth is displayed as “searching” when the unit is turned on and adjusting to the well. Once the signal is locked and stable, the depth is displayed in the units selected. Occasionally a spurious depth reading will be calculated due to random noise in the well. Software in the Well Watch identifies the anomaly and holds the last good data through a few bad data points while a good depth is obtained. An asterisk is displayed before the depth while holding. If a stable depth is not found in several tries, the depth is replaced with “searching” until one can be found.

Data displayed on the second line can be changed by pressing the UP or DOWN arrow. Data available varies depending on options enabled on each unit. If there are any error conditions, such as when the probe is not on the well, or when the battery low, an error message will alternately be displayed on the second line.

PROBE TEMP– Displays the temperature measured in the controller unit.

BATTERY – Displays the measured voltage of the external power supply. The Well Watch maintains calibration down to 6.5 volts. An alarm message is displayed when the voltage drops below 6.5 volts. The unit will continue to operate, but with reduced signal strength down to about 5.5 volts.

DIAGNOSTIC DISPLAY – This display provides diagnostic data for each pulse for technical support. While on this display page, press the ENTER key to set the pulse width. It will be displayed as PW=nnn in the lower right corner, where nnn is the pulse width ranging from 0 to 100. Lower numbers are shorter (higher frequency) pulses which are more directional and more sensitive to imperfections in the well, but tend to work better in larger diameter wells (larger than 6”). Higher numbers (lower frequency) pulses work better following irregular wells and getting past partial obstructions.

SET MODE DESCRIPTIONS

PRODUCT INFO – Displays the product type, configuration and the software version number. The unit serial number is displayed by pressing the UP or DOWN button.

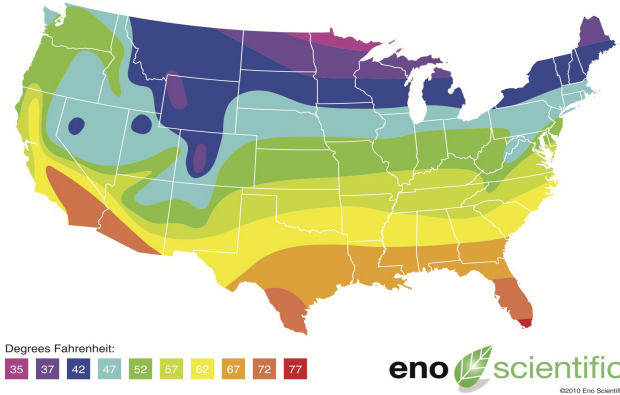
UNIT ID – Sets a user selectable ID number in the range 0-255 to identify the source of logged data. Set the unit ID number by pressing the UP or DOWN button.

RANGE MIN – Sets the minimum distance to start detecting in feet (M). This is used where there may be a known defect in the well such as a step down in bore diameter. This kind of defect will reflect some of the pulse which could compete with the desired reflection from the water surface. If for example this transition occurred at 42 feet, then set the range min to 45 feet or more.

RANGE MAX – Sets the maximum distance in feet (M) the Well Watch will listen for a returning pulse. A shorter range means more frequent pulses and faster updates. A longer range gives less frequent updates and increases the possibility of collection spurious noise.

WELL TEMP – Sets the deep temperature in the well. If you do not know the well temperature, reference the Water Temperature chart included with your unit. The temperature near the surface is automatically sensed by the probe. These two temperatures are used to calculate the sound speed and in turn, the distance. The distance error is fairly small for variations in temperature, about 1% for a 10 °F (5.6 °C) temperature error.

Groundwater Temperature Map



METHANE % – Sets the average concentration of methane in the well. This compensates for a increased sound speed in methane. If uncompensated, the well sounder will calculate a shorter distance by nearly 30% if the well is full of methane.

SOUNDING TUBE DIAMETER – Sets the sounding tube diameter. This compensates for a reduced sound speed in tubes smaller than 2” in diameter. For tubes 2” or greater, set to “None”.

WELL DIAMETER – sets the diameter of the well casing in inches (cm). This is used to calculate the total water in the well.

WELL DEPTH – sets the drill depth of the well in feet (M). This is used to calculate the total water in the well in gallons (liters). The pump depth may be used here to calculate useable water in the well.

OFFSET – sets the offset of the probe position from ground level. If for example, the probe is inserted into a well cap on a well casing that extends 30” above the ground. Then enter 30” for the offset. This will automatically be deducted from the depth reading. This may also be negative if the probe is installed on a casing below ground Level.

LOGGING – enables the logging features of the Well Watch. Press the UP or DOWN button to select the logging preference. Three logging modes are available: Disable, Enable or Change. Enable sets the unit to record data each logging period. Change sets the unit to compare data each period against the last logged data point. The new data point is stored in memory if the measurement has changed more than the log change margin (as defined in the Log Change mode.) When it is time to record a new data point, a log message is displayed on the error line and remains until valid data is recorded. *Do not remove the probe or turn off the Well Watch until this message disappears.*

Once logging is enabled, new data points will be added to the end of the list until the memory is full. When the memory is full the Well Watch will continue to function but new data points will be discarded. The 2010 PRO records data additionally in windows readable text files which has a much larger capacity and will continue to record.

LOG RATE – sets the time interval in minutes between logged data points in the range 0 to 720 minutes (or once per 12 hour period). This is accessed by pressing SET after choosing ENABLED in the LOGGING menu. Every measurement is recorded if it is set to zero.

NOTE: *If Logging and Power Save are both enabled the Well Watch will default to the interval chosen for the Log Rate, not the Power Save interval.*

RS232 DATA – enables the transmission of current data over the RS232 connection. This feature is used when the Well Watch is used with a remote readout or data transmission system such as SCADA or a PC. Press the UP or DOWN button to select: Off, Continuous, Depth only. When set to Continuous, every measurement is sent over the serial port automatically. Transmitted data includes all measured data, as well as the error code. When Depth Only is selected, only the depth is included in the data. Select Off to deactivate this feature.

RS232 SETUP – Press the UP button to change the selected value, or the DOWN button to change which value is selected. The default is 19,200 baud, 8 data bits, 1 stop bit, and no parity.

RS485 MODBUS DATA – sets MODBUS parameters for transmission of data over the RS485 connection. Two modes are available: RTU (default) or ASCII. This feature is used when the Well Watch is used with a remote readout or data transmission system such as SCADA or a PC. Press the UP or DOWN button to make the selection. Select Off to deactivate this feature.

RS485 SETUP – Press the UP button to change the selected value, or the DOWN button to change which value is selected. The default is 19,200 baud, 8 data bits, 1 stop bit, and no parity.

MODBUS ADDRESS – This is the address which will identify the Well Watch on the Modbus bus.

RF COM – Enables the wireless transmitter for communications with the Eno Scientific remote display unit. Select OFF to disable the transmitter, BROADCAST to continuously broadcast, or POLLED to allow unit to be controlled by the optional remote readout unit.

ANALOG OUTPUT – Choose between 0-5V and 4-20mA output. Once chosen the user will be prompted to set depths to associate with the 0-5V and 4-20mA levels.

ALARM – Enables the High or Low Alarm.

The options are:

- None to keep the output at 0v,
- Low to set the output to 5v when the water level reaches the deep set point.
- High to set the output to 5v when the water level reaches a shallow set point.
- Both so that the output will be 0v when the water level is between the high and low set points and 5v otherwise.

ALARM HIGH SETPOINT/ ALARM LOW SETPOINT – These screens are added to the set screens when the Alarm feature is activated. Press the UP or DOWN button to select the set points for the alarm. So for example, if Alarm Low is selected and the low set point is set to 150, then the output level will be 0 volts when the depth is less than 150, and it will be 5 volts when the depth is 150 or more.

UNITS – Selects the measurement system for the data. Press the UP or DOWN button to scroll through the options: English for decimal feet, degrees Fahrenheit and gallons; English ft-in for distance displayed as feet and inches; Metric for meters, degrees Celsius, and liters, or Imperial for feet, degrees Fahrenheit and imperial gallons.

POWER SAVE – Set the power save feature to conserve battery life. **NOTE: For the 670B Power Save should be turned ON and an interval time of greater than 1 min**

should be chosen. If Power Save is OFF the batteries will only last approximately 2.5 days. Battery life is directly dependent on the sample rate chosen.

When the batteries are fully charged, the expected battery life is as follows:

<u>Interval</u>	<u>Battery Life</u>
Once per minute	5.5 weeks
Once every 10 minutes	19 weeks
Once per hour	24 weeks
Once per day	26 weeks

To wake a unit in sleep mode, push the Display button.

NOTE: If Logging and Power Save are both enabled the Well Watch will default to the interval chosen for the Log Rate, not the Power Save interval.

CONTRAST - Sets the contrast level on the LCD screen from 0 (brightest) to 20 (dimnest).

SAVE SETTINGS – Settings changed on the set screens will remain until the power is turned off, unless they are saved. Press ENTER on this screen to make the current settings the power on defaults.

FACTORY RESET – Allows the user return the unit to the factory default configuration. Press the ENTER button to make the selection. All user settings will be set to the Factory default values.

LOGGING

The Well Watch 670/670B includes a built-in data logger which can record the measurement data automatically at preset intervals when automatic logging is enabled. Each data point includes the system time and date, well ID, depth, temperature, battery voltage, signal strength, and error codes. The data is recorded in the internal flash memory which maintains the data even if the battery goes dead. The internal memory is large enough to hold more than 25 million data points. This memory is only accessible using the USB interface as described in the next section.

To automatically log data on a schedule, press the SET button repeatedly until the logging screen appears. Then press the UP or DOWN button until the second display line reads ENABLED. Then press the SET button again to show the Log Rate screen.

Press the UP or DOWN button to set the log interval in minutes. If the log rate is set to 2 minutes, the Well Watch will initiate a log sequence every two minutes. The time between logged data may vary by a few seconds depending on how long it takes to get a stable reading. If the log rate is set to zero minutes, then every reading is logged which is approximately every second.

The log data files are simple ascii text files which can be opened with any common program such as Notepad, MS Word or Excel. The data files created are named WSLOGxxx.TXT where xxx is the Unit ID in the form 001 etc. (Unit ID is chosen in the Unit ID setting and can be a number between 0-255). Each data point stored is appended to the file corresponding to the currently set Unit ID. If a file does not exist for the Unit ID selected, it is created. Once the data is copied to the computer, the file can be deleted from the Well Watch. A new file will be created if the same ID is used.

Each time a Unit ID is entered in the Unit ID setting, all subsequent log points are stored in the file associated with that ID. The Well Watch can store data for multiple Unit IDs simultaneously. For example, when monitoring multiple wells, you can assign a unique Unit ID to each well. If you are taking readings from Well 7, set the Unit ID to 007 before logging data. All log points recorded while Unit ID 007 is selected will be stored in the corresponding file. When the Well Watch is connected to a computer for data download, a separate file will be available for each Unit ID that contains stored data.

USB COMMUNICATIONS

The Well Watch 670/670B contains an expanded memory which provides enough memory to record one data point per minute for over 50 years. This memory supports a windows compatible file system which can be accessed using the USB port. When the Well Watch is connected to a computer with the included USB cable, the computer will identify the Well Watch as a mass storage device and show the available log files in an explorer window which can be copied directly to a directory on the computer and deleted from the Well Watch.

ANALOG OUTPUT

The Well Watch 670/67B comes standard with 0-5 volt and 4-20 ma analog outputs. They are both driven by a common source so that when the output voltage is 0v, the output current is 4 ma, and when the output voltage is 5v the current is 20ma. The output range is set by the user by selecting the Analog depth @0v and the Analog depth @5v. The voltage will then vary monotonically over this range and may be increasing or decreasing.

The 0-5 volt output can supply a maximum of 15ma.

The 4-20 ma output is a current regulator for an isolated voltage up to 36 v supplied externally. The Well Watch cannot be powered by the current loop voltage.

RS232 COMMUNICATIONS

The Well Watch 670/670B offers a standard serial communications port for connection to a computer or remote device such as a SCADA system or remote readout. Screw terminals are provided for connection to the RS232 port. To connect to a standard device such as a PC with a standard 9 pin D connector, only 3 wires are necessary. The TX terminal on the well watch goes to pin 2 on the D connector, RX goes to pin 3 and GND goes to pin 5. A simple serial to USB adapter is available from Eno Scientific or most computer stores to use with laptops without serial ports. The default serial configuration on the Well Watch is 19200 baud, 8 data bits, 1 stop bit, no parity, and no flow control. These settings can be changed from the set screen on the keypad.

The serial port is bi-directional and allows communication from the Well Watch to the remote device and back. This allows the Well Watch to be programmed and operated from a remote location. The Well Watch offers a complete command set over the serial link to allow configuring the Well Watch settings. A standard terminal emulator program such as HyperTerminal (included with windows) or Tera Term Pro (available for free download from <http://www.logmett.com>) can be used from a computer to operate the Well Watch remotely (see the section on remote operation).

The Well Watch can also be instructed to automatically transmit new data over the serial port as it is generated. To activate this feature from the keypad, press the SET button until RS232 data is displayed. Press the UP or DOWN button to select continuous, or depth only. When set to continuous, the complete data set is transmitted with each pulse. When set to depth only, only the depth is transmitted.

REMOTE SERIAL OPERATION OVER RS232

When the Well Watch 670/670B is connected to a computer or other bi-directional remote device, the Well Watch can be controlled and configured using a set of simple commands.

If using a terminal emulator on the computer, establish a connection with the Well Watch by selecting the COM port connected to the Well Watch. If your computer has a

built-in com port, it will probably be COM1. If you are using a USB adapter it may be any where from COM3 thru COM12. Then enter the port settings: 19200 baud, 8 data bits, parity none, 1 stop bit, and flow control none. Turn on the Well Watch and press the <return> key on your computer. If it is set up correctly, the Well Watch will return with a line of data and a WS2k> prompt on the screen. If the Well Watch does not respond, select a different COM port and try again.

Once the connection has been established, commands can be send from the computer to the Well Watch. The remote commands are case sensitive and must be entered exactly as shown on the list below. One command per line, terminated by a <return>. Extra tabs or spaces will not be accepted.

Examples:

Press "m30<return>" to set the min range to 30 feet.

Press "u0<return>" to set english units mode or "u2<return>" to set metric.

If serial output is enabled, the prompt and input may be written over on the screen but the input will still be interpreted correctly. It may be easier to disable the serial output while using remote commands. Press "cs0<return>" to turn off serial reporting and "cs1<return>" to turn in back on when finished.

USER REMOTE COMMANDS - In the following list, [iiii] indicates a parameter of up to a 4 character integer (no decimal point), [dddd] indicates up to 5 character decimal number (decimal point optional), [cc] indicates two nonnumeric characters, and <ret> indicates a return.

<ret>	send current data
a0<ret>	alarm off
a1<ret>	low alarm on
a2<ret>	high alarm on
a3<ret>	both alarms on
ah[iiii] <ret>	set high alarm level
al[iiii] <ret>	set low alarm level
cs0<ret>	turn off RS232 reporting
cs1<ret>	turn on RS232 continuous reporting
cs2<ret>	turn on RS232 continuous reporting depth only
csb[i] <ret>	set baud rate (CAUTION – once the command is accepted, communications will cease until the terminal setting is changed to match)
	0 –300
	1 – 1200
	2 – 2400

	3 – 4800
	4 – 9600
	5 – 14400
	6 – 19200
	7 – 38400
	8 – 57600
csd[iic]	set the data bits (5-8), stop bits (1-2), and the parity (n,o,e) for none, odd, or even. Default 81n.
cm0<ret>	turn off RS485 Modbus
cm1<ret>	turn on RS485 Modbus
cma[iiii]<ret>	set RS485 Modbus address
cmm[i]<ret>	set RS485 Modbus mode 0=RTU, 1=ASCII
cmb[i] <ret>	set baud rate (see rate table above)
cmd[iic]	set the data bits (5-8), stop bits (1-2), and the parity (n,o,e) for none, odd, or even.
cf0<ret>	turn off RF wireless transmitter
cf1<ret>	turn on RF wireless transmitter broadcast mode
cf2<ret>	turn on RF wireless transmitter polled mode
cfa[iiii]<ret>	set RF wireless address 1-255
h<ret>	display command list
i[iii]<ret>	set unit ID
l0<ret>	logging off
l1<ret>	logging on
lp[iiii] <ret>	logging period minutes
m0<ret>	puts unit in normal operation mode
m1<ret>	puts unit in set mode
nh[dddd] <ret>	set depth at which the analog output is 0volts.
nl[dddd] <ret>	set depth at which the analog output is 5volts.
rn[dddd] <ret>	set minimum measurement range
rx[dddd] <ret>	set maximum measurement range
tm[hh:mm:ss] <ret>	set time
td[yy/mm/dd] <ret>	set date
u0<ret>	set english units (ft)
u1<ret>	set english units (ft in)
u2<ret>	set metric units
w[dddd] <ret>	set well temperature
?<return>	send a list of the current settings

INTERPRETATION OF DATA

DATA QUERY - A simple <return> sent to the unit instructs the unit to send the current data set. Each data element is preceded by an upper case letter for the identity of the following number. A typical data line is as follow: data, time, D depth, other data, B battery voltage and the R error code. (see the error code section for codes).

Example:

```
WW670 >  
>> #000 D 74.45 T 76.4 B 5.97 R 0002  
WW670 >
```

This indicates that the depth is 74.45 feet, the probe temp is 76.4 F, the battery voltage is 5.97, and the error code is 2 meaning that the battery voltage is below 6.5 volts.

SYSTEM STATE - A "?" command sent to the unit instructs the unit to send its current operating state. This will include 3 lines of data. The first line reports the model number and features, the software version, the unit serial number, and the user set ID number. The second and third lines report the applicable system settings prefixed by the commands used to set them as listed in the table in the section on external commands.

Example:

```
WW670 > ?  
Mod #WW670-077303 Ver # 6701-008 Ser #080628015 ID #001  
rn 25.0 rx 500.0 w 60.5 u0 a0 al 500.00 ah 25.00  
nh 25.00 nl 500.00 cs0681n cm0681n RTU 11 cf0 6  
WW670 >
```

In this example, "rn" indicates that the min range is 25.0, and the well temperature is set to 60.5 degrees, etc.

MODBUS COMMUNICATIONS

The RS485 port on the Well Watch 670/670B is configured to communicate as a slave device on a two wire Modbus bus. When the RS485 Modbus port is enabled, the Well Watch becomes a Modbus slave device listening for data requests from a Modbus master device using either RTU or ASCII mode. Data requests with the address set in the Well Watch will be processed and a data packet containing the requested data will be sent back to the master.

The Well Watch can be configured for a Modbus network by pressing the SET button repeatedly until the display reads RS485 Modbus. Then press the UP or DN button to select the Modbus mode, either RTU or ASCII. Press the SET button again to show the serial settings, the baud rate, number of data bits, stop bits and the parity. The flashing number is selected and can be increased by pressing the UP button. The next number can be selected by pressing the down button. Press the SET button once more to set the address for the Well Watch. This can be any number from 1 to 243 which has not been used by any other device on the network.

By default, the Well Watch is set to the most typical settings:

9600 baud, 8,1,even
RTU mode
address 011

Information in the Well Watch is accessed by register number using Modbus function 3 to read registers, 6 to write registers, or 16 to write multiple registers. It should be noted that well watch registers are 32 bits wide and may represent integers or floating point data. By default, Modbus assumes registers are 16 bits wide, and transmitted in a character stream with bits 8-15 in the first character and bits 0-7 in the second. To transfer a 32 bit register, the Well Watch assumes two 16 bit registers are transmitted with the low order 16 bits in the first register then the high order.

The addresses are listed below.

All of the Well Watch data is sent as 32 bit words as either floating point representations or as integers. The master device needs to be set accordingly.

Address space REGISTERS (read only):

100	Depth running ave	32 bit Float
101	Depth instantaneous	32 bit Float
102	Depth at power max	32 bit Float
106	Water in Well	32 bit Float
107	Depth last good	32 bit Float
110	Battery Voltage	32 bit Float
111	Probe Temp	32 bit Float
112	Error Code	32 bit Integer
113	Gain Pulse	32 bit Integer
114	Gain Echo	32 bit Integer
2000	Software version	32 bit Integer
2001	Build Number	32 bit Integer
2002	Configuration	32 bit Integer
2003	Features	32 bit Integer

2004	Serial Number	32 bit Integer
------	---------------	----------------

Address space REGISTERS (read/write):

1010	RS232 packed parameters	32 bit structure
1011		RS232 mode 32 bit Integer
1012	RS232 baud	32 bit Integer
1013	RS232 data bits	32 bit Integer
1014	RS232 stop bits	32 bit Integer
1015	RS232 parity enable	32 bit Integer
1016	RS232 parity	32 bit Integer
1020	RS485 packed parameters	32 bit structure
1021	RS485 mode	32 bit Integer
1022	RS485 baud	32 bit Integer
1023	RS485 data bits	32 bit Integer
1024	RS485 stop bits	32 bit Integer
1025	RS485 parity enable	32 bit Integer
1026	RS485 parity	32 bit Integer
1027	RS485 modbus address	32 bit Integer
1028	RS485 modbus mode	32 bit Integer
1030	RF packed parameters	32 bit structure
1031	RF mode	32 bit Integer
1032	RF address	32 bit Integer
3000	Unit ID	32 bit Integer
3002	Contrast	32 bit Integer
3003	Units	32 bit Integer
3004	Range Max	32 bit Float
3005	Range Min	32 bit Float
3006	Well Depth	32 bit Float
3007	Well Diameter	32 bit Float
3009	Well Temp	32 bit Float
3012	Alarm enable	32 bit Integer
3013	Hi Alarm	32 bit Float
3014	Low Alarm	32 bit Float
3015	Analog 0v depth	32 bit Float
3016	Analog 5v depth	32 bit Float
4000	Battery Scale	32 bit Float
4001	T1 cal A	32 bit Float
4002	T1 cal B	32 bit Float
4003	Analog cal A	32 bit Integer
4004	Analog cal B	32 bit Integer
4005	Sound Speed A	32 bit Float

4006	Sound Speed B	32 bit Float	
4007	Sound Speed C	32 bit Float	
4008	Pulse Width	32 bit Integer	
4009	Pulse Width 2	32 bit Integer	
4010	P ignor	32 bit Integer	
4011		Fing len	32 bit
	Integer		
4012	Gain stl	32 bit Integer	
4013	Gain inc	32 bit Integer	

MAINTENANCE

LITHIUM BATTERY – There is a lithium coin cell inside the unit to maintain the system clock and settings. This is a common type 2032 battery available at most local outlets. This battery typically lasts 2 years or more. If the unit powers up in the set date mode, this indicates that the battery needs replacing. This battery can be accessed by removing the 4 corner screws on the back of the unit. Then carefully slide the circuit board assembly out of the case being careful to avoid pulling the interconnecting wires. Replace the battery and slide the electronic assembly back into the housing being careful to prevent the flat cable from being caught or pinched in the seal when the screws are replaced. Tighten the screws to snug being careful not to strip the threads.

670B BATTERIES – The Well Watch 670B has a battery compartment in the center hinged section which contains two Lithium 18650 batteries. **The 18650 batteries need to be fully charged prior to being deployed in the field.** It can be charged by plugging it into a wall outlet using the included power supply. When plugged up 2 red lights and 2 green lights will be illuminated under the ON/OFF switch. Once the unit is fully charged the red lights will go out. The green lights will stay illuminated while it is connected to external power.

FREQUENTLY ASKED QUESTIONS

Q: Can I use the Well Watch on an open well?

A: The Well Watch was designed to work on a closed well. A simple piece of rigid card board or plastic held tight against the opening is enough to meet this requirement. In many cases it will work on the open well but may be off by a couple feet.

Q: Does the Well Watch work on wells with the pump installed?

A: Yes. The sound pulse used for measuring is not disturbed by the presence on pump wiring or piping.

Q: What if there are guard rings or torque arresters on the pump line?

A: The Well Watch will read past most guard rings and torque arresters with little signal attenuation. Some torque arresters may block more than 90% of the well opening and may cause problems.

Q: Will the Well Watch work with the pump running?

A: Generally, yes. If however the pump is exceptionally noisy and or the water level is near or below the pump, it is possible that the noise from the pump could interfere with the depth measurement.

Q: Does the Well Watch work on larger diameter wells?

A: The Well Watch, with the standard probe, works on wells up to 18" in diameter. However, as the well diameter increases, the signal strength weakens and becomes more susceptible to pump noise and imperfections in the well. It is recommended that on wells larger than 8" that a sounding tube be used. For wells over 8" in diameter or with a turbine pump you should choose the Well Watch 700.

Q: How deep will the Well Watch measure?

A: The maximum range is 7000 feet. This may not be achievable on all wells however. On a good 6" well with tight clean casing all the way down to the water and little or no obstructions along the way, maximum range can be achieved. On uncased wells drilled through porous stone or with irregular walls, or any obstructions such as spacer rings or couplings the range will be reduced.

Q: Does the Well Watch work in wells with perforated casing?

A: If the perforations are exposed (above the water line) and the exterior of the casing is very porous like crushed stone, then the perforations will dampen the sound pulse and there will be no reflection for the Well Watch to detect. In this case, the Well Watch will track the descending water level until it gets to the perforations and then stick at the start of the exposed perforations as the water level continues to descend.

Q: Does the Well Watch work in crooked wells?

A: Yes. The sound pulse used to measure the depth will even go around corners and obstructions which block less than 90% of the well opening.

Q: What if the well contains a constant pressure pump system with the accumulator tank in the well?

A: The in well accumulators tend to block the well shaft entirely. If this is the case then the Well Watch will be unable to find the distance to the water past the accumulator.

Q: Can the Well Watch measure past a pit-less adapter?

A: Yes. The common side mount pit-less adapter typically does not block a significant portion of the well opening and will not interfere with the depth sensing. Some pit-less adapters, however, are recessed into the well and do block most of the opening (ex. spool type pitless adapters). These installations may be more difficult. There are two ways to handle these cases: The probe spout can be extended into the well and seated on the access hole through the pit-less adapter. When this is done, the microphone tube must also be extended to reach into the well cavity.

Q: Can the Well Watch be used on hand dug wells?

A: Hand dug wells are often fairly large, irregular and shallow; as such may cause problems for the Well Watch due to multiple or weak reflections. Some work and some do not. However, in any difficult to measure well, a small tube can be installed specifically for measurement. A 3/4" PE pipe can be used for up to 1000' provided splicers do not restrict the ID. The Well Watch has a minimum distance to water of about 15' so it cannot measure any levels above that point.

Q: Can I use the Well Watch to measure the water level in a tank?

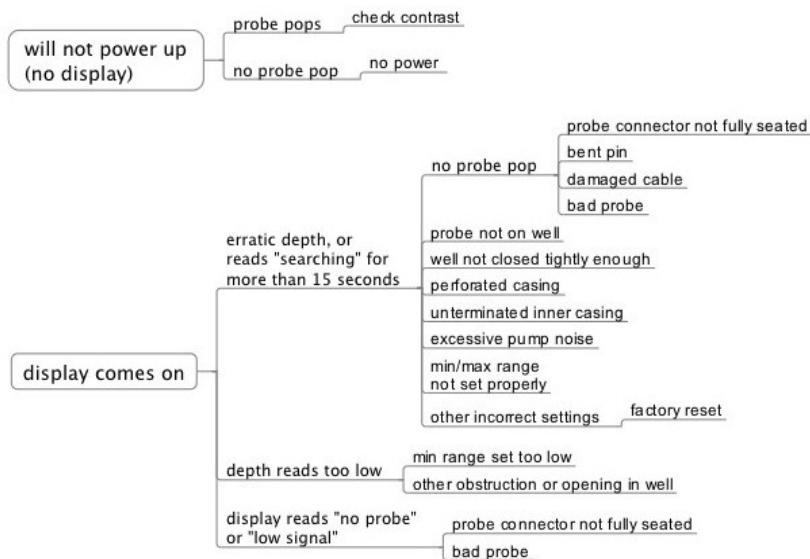
A: There are three issues here. First, the Well Watch is designed to be used in a constant diameter pipe. Tank measurement is generally into a large opening which would create multiple reflections and hence an uncertain reading. Second, the minimum measurement distance is about 15 feet, so unless the sounder is mounted at least 15 feet from the maximum water level, it would not be useful. And third, the sensing probe is not designed for use with any pressure. Both sides of the probe must be maintained at atmosphere. This being said, it is possible to install the sounder on a sensing tube above the tank extending 15 feet above the maximum water level and down to the lowest level to be measured.

Q: My sounding tube is 3/4" PVC schd 80 with threaded couplings every 20ft. The Well Watch reads the depth at 20'. Why?

A: The pocket created at each joint is significant compared to the inside diameter of the PVC pipe, and therefore causes the pulse to reflect at each coupling. You will notice that if the min range is increased to 25ft, the depth will jump to 40ft. And when

increased to 45ft, the depth will jump to 60ft etc. In many cases, after the the pulse has passed the nearby stronger reflections, the stronger reflection from the water will dominate and the depth will jump up to the water level.

TROUBLESHOOTING



ERROR CODES

The error codes are composed of 4 hexadecimal digits, where each digit is composed of 4 bits with values of 1,2,4, and 8. You add the 4 bit values together to get the resulting code. This sounds complicated but it really is not.

Here is how it works for the right digit:

The bits are:

- 1 – Power Fail
- 2 – No Probe
- 4 – Low Bat
- 8 - SD

So if the battery was low, the right digit would be 4. If there was also a power fail, it would be 5. If there was also a no probe error the digit would be 7. If there was an SD error, the total could get up to 15. This is where the hexadecimal comes in. Any total greater than 9 gets a letter from A to F. So 10 = A, 11 = B, 12 = C, 13 = D, 14 = E, and 15 = F.

For the second digit the bits are:

- 1 - FP (signal processing error)
- 2 - CC (signal processing error)
- 4 - Log Full (flash memory)
- 8 – RS232 error

The third digit:

- 1 - Probe error
- 2 - Low Alarm
- 4 - High Alarm
- 8 - Low signal

And the left digit:

- 1 - High Signal
- 2 - USB Connected
- 4 - R14
- 8 - R15

SPECIFICATIONS

POWER:

External Power (optional): 6.5 to 12VDC at 80ma max. Do not exceed 16V. Screw terminals and adapter with 5.5mm x 2.1mm center post positive connector.

Real time clock: Li Ion 3V battery CR2032.

670B: 2 18650 LITHIUM RECHARGEABLE BATTERIES.

MEASUREMENT:

Units: Selectable English(ft, gal, °F), Metric(M, L, °C), Imperial(ft, Imp gal, °F)

Resolution: .05 ft

Accuracy: .1 ft (see notes)

Range: 15 to 7000 feet. (see notes)

LOGGING:

Memory: nonvolatile flash memory for approx 25,000,000 data points.

Logging rates: Once per second up to once every 12 hours per sample.

ENVIRONMENTAL:

Temperature: -10 to 110 F

Humidity: 10 to 90% non-condensing.

PHYSICAL:

Dimensions: 3.5x3.5x6" exclusive of the removable spout

Unit Weight: ~16 oz.

FEATURES:

Display: 2x16 character LCD

USB for access to the log data

RS232 Serial Port: baud 300 – 57600, 8 data bits, one stop bit. (19200 baud default).

RS485 Serial Modbus Port: baud 300 – 57600, 8 data bits, one stop bit. (19200 baud default).

RF Wireless Port: Proprietary for communication with the Eno Scientific remote display.

Analog Output: 0-5 volt @15ma max, and 4-20 ma @36v max.

Alarm Output: 0-5 volt alarm output @15ma max.

ADDITIONAL NOTES

The specified accuracy is achieved provided certain conditions are met. Since the distance calculation is determined by timing the returned echo, it is important that a free path is available for the pulse to travel to the water surface and return. It is possible that an obstruction such as torque arrester or centering ring on a pump pipe can cause a premature echo or distort the pulse causing the effective pulse to shift one way or the other. It is also possible that a breakout or large fracture opening can also cause a false echo. Ordinary pump piping and wiring will not interfere with the measurements.

The accuracy is also dependent on the sound speed in the well. Since the sound speed is determined by the temperature, the average temperature must be specified correctly. The error is approximately $.1\%/^{\circ}\text{F}$.

The maximum range is limited by the maximum time during which the echo is monitored, and the strength of the echo signal. Uncased wells drilled through porous material can attenuate the signal faster than the rated distance, making detection impossible.

WARRANTY AND SERVICE

Eno Scientific warrants to the user that all products manufactured by Eno Scientific, will be free from defects in workmanship and materials for 1 year from the date of shipment.

Eno Scientific warrants to repair or replace any such defective equipment or part (determined to our satisfaction to have a defect in workmanship or original material) upon receipt and inspection of such defective equipment to Eno Scientific with all shipping pre paid by the user.

In no event shall Eno Scientific be liable for any direct, indirect or consequential damages, abuse, acts of third parties (rental equipment), environmental conditions or other expenses which may arise in connection with such defective equipment. This warranty shall not apply to damage of equipment caused by incorrect installation, usage, lightning, storage, alteration or inadequate care.

This warranty does not apply to parts, assemblies or devices not manufactured by Eno Scientific which are covered by other manufacturers' warranties. There are no warranties except as specifically provided in writing herein.



www.enoscientific.com

Contact Eno Scientific with any warranty or service questions.

For additional information, please visit our website at www.enoscientific.com.